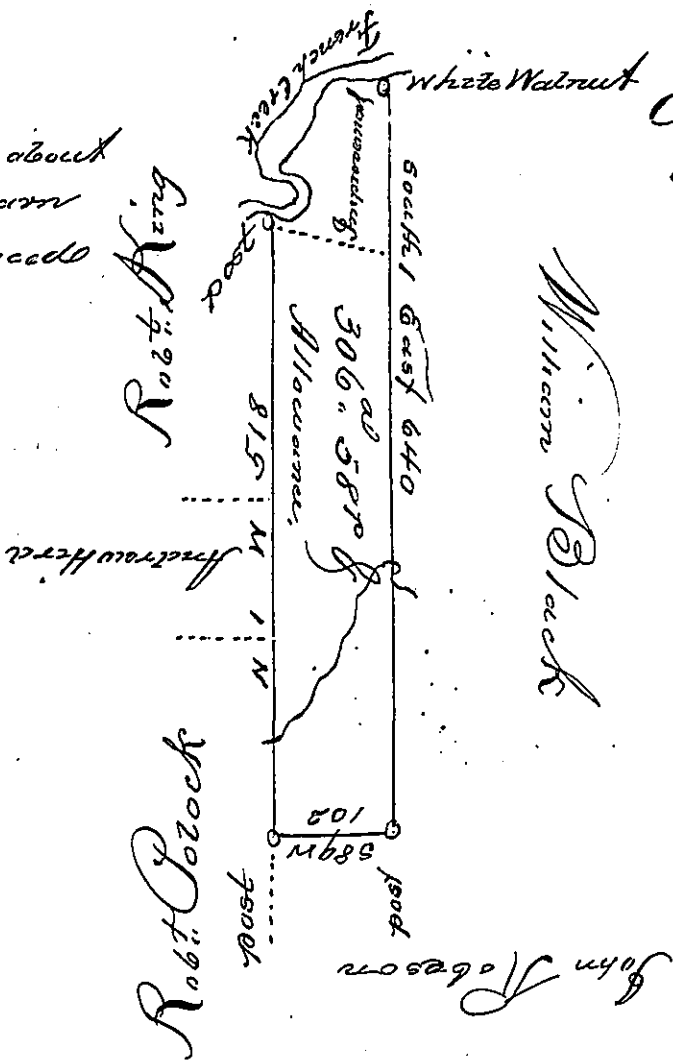


The Improvement contains about
Forty acres with a house & Barn
The Settlement was commenced
in June, 1793.



Courses & Distances
up the Creek.

East	9
N 74 E	14
N 57 E	16
N 2 E	14
N 41 W	20
N 86 W	26
N 10 E	13
N 47 E	28
N 22 E	8
N 50 E	12
N 1 W	24
N 82 E	70

A Draught of a Tract of Land Situate on the East side of French
Creek in Le Sueur Surveyed the 29th of July, 1814, for Thomas Black
Jr. on his warrant bearing date the 3rd day of April, 1802, contain-
ing Three hundred & six acres & Fifty-eight perch & allowance of six per
cent Geo.

Jonah Cowgill D. J.

To Richard T. Leach Esq.
Surveyor General

IN TESTIMONY that the above is a copy of the original remaining on file in
the Department of Internal Affairs of Pennsylvania, made
conformably to an Act of Assembly approved the 16th day of
February, 1833, I have hereunto set my Hand and caused
the Seal of said Department to be affixed at Harrisburg,
this second day of June 1903.

Isaac B. Brown
Secretary of Internal Affairs.